

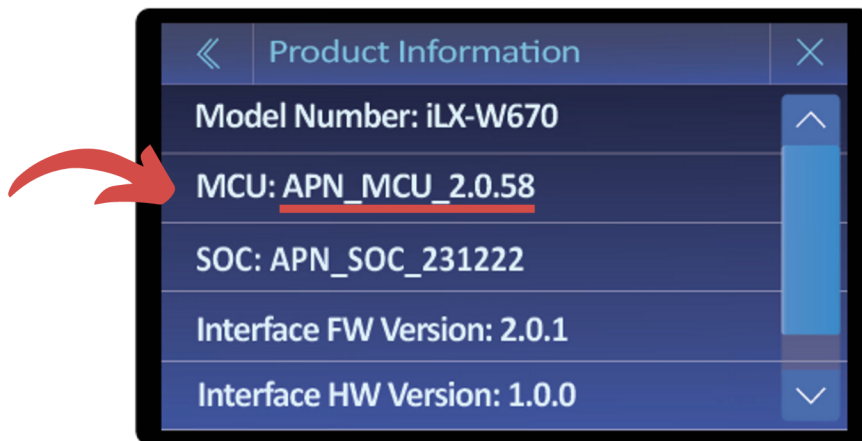
AXSWC | Alpine iLX-W670 Instructions

Use the guide below to help install and program the AXSWC with an Alpine iLX-W670 receiver.

Radio Specific Steps

Use the following steps to program the iLX-W670.

1. On the **iLX-W670 interface**, navigate to the **Product Information** screen.
2. Locate the **MCU** field and verify that the MCU displayed is **APN_MCU_2.0.58** (shown below).
 - a. If APN_MCU_2.0.58 is displayed, proceed to **Step 3**.
 - b. If APN_MCU_2.0.58 is not displayed, update the product software using the instructions found here.
 - i. Complete the software update, then return to this guide.



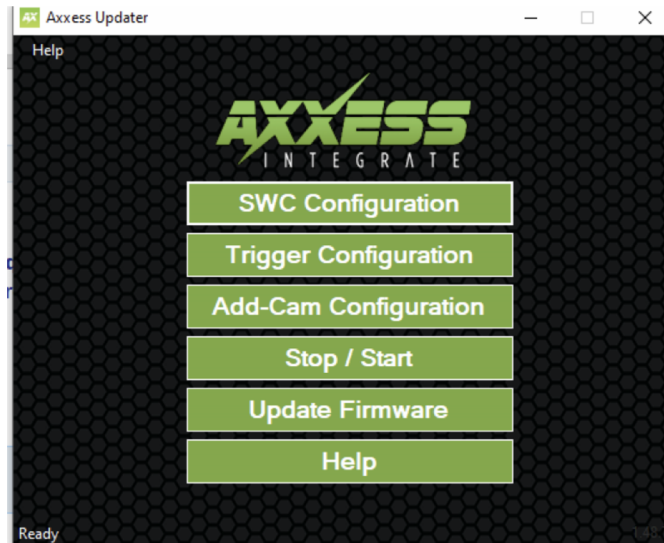
3. Navigate to the **System** settings screen.
4. Tap the **SWC Adapter** selection field, and from the available choices, select **With Adapter** (shown below).



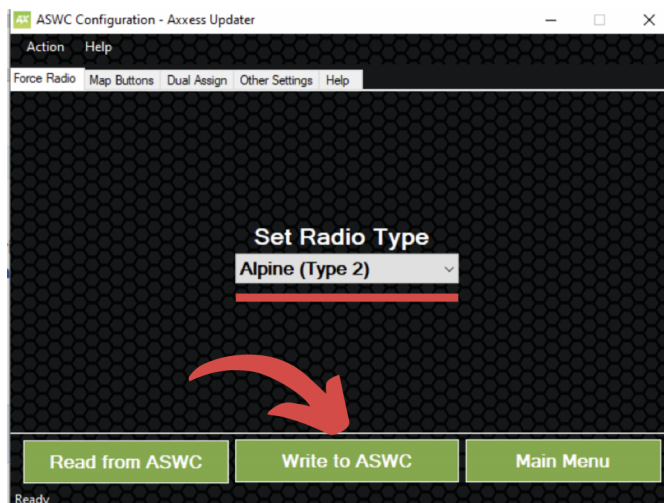
AXSWC Instructions

Software

1. Using the Axxess Updater Software, ensure the AXSWC's software is up to date.
2. Once downloaded, open the **Axxess Updater Software** application.



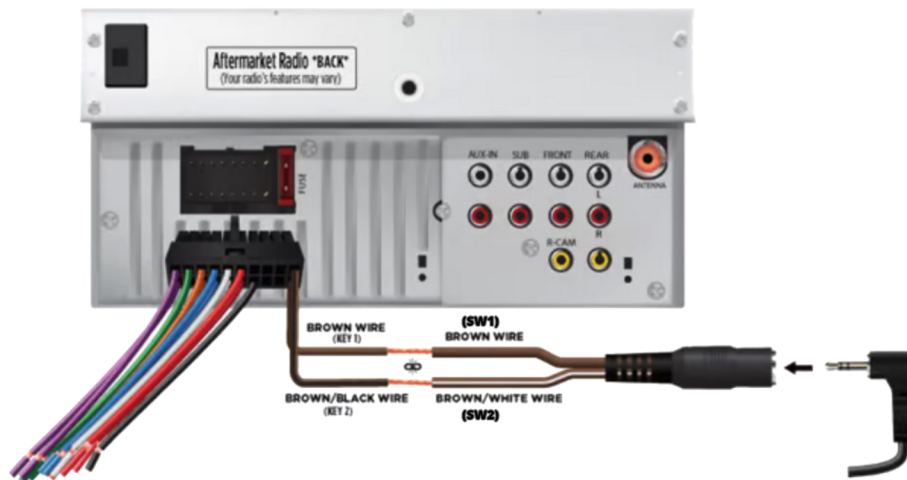
3. From the **Home** screen, click **Update Firmware** and either:
 - a. Verify the **firmware** is up to date
 - b. Update the **firmware** following the onscreen instructions
4. Return to the **Home** screen and click **SWC Configuration**.
5. On the **SWC Configuration** screen, ensure that the first tab, **Force Radio**, is selected.
6. From the **Set Radio Type** dropdown field, select **Alpine (Type 2)**.
7. Click **Write to ASWC**.



Wiring

Connect the following wires:

1. The steering wheel control wire, **SW1**, to the **Brown** wire of the connector.
2. The remaining steering wheel control wire, **SW2**, to the **Brown/White** wire of the connector.



The installation and programming process is complete.

NOTE

If you've exhausted every troubleshooting step offered, contact **Technical Support**.