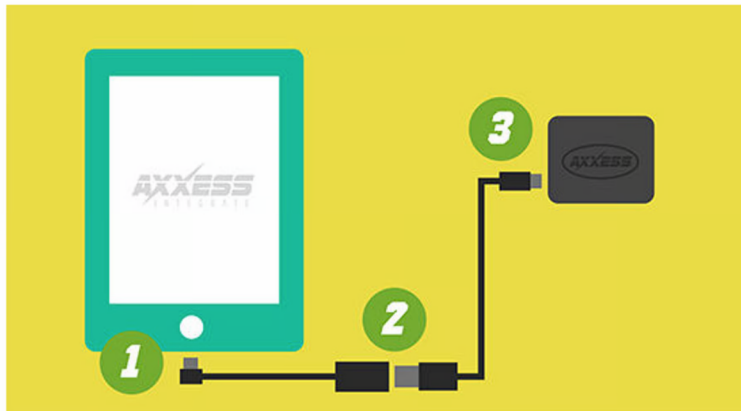


AXSWC | Sony Radio Programming Instructions

TIP

If using a PC or Mac, follow the [Desktop Installation Instructions](#). If using the App, follow the [App Installation instructions](#). If you cannot access a PC or mobile device, use the [General Instructions](#) below.

General Installation Instructions



1. Program, the interface to the vehicle using a vehicle specific instructions guide.
2. Turn the ignition **On**.



3. Press and hold **Volume Down** on the steering wheel until the LED turns solid **Red**. (continued on Page 2)

Hold Volume Down



General Installation Instructions (cont.)

4. Release **Volume Down**.
5. Press and hold **Volume Up** on the steering wheel until the LED turns solid **Red**.

Hold Volume Up



6. Press and hold **Volume Down** on the steering wheel until the LED turns solid **Red**.

NOTE

Example: Repeat Step 5 twenty-two (22) time for an Axxera radio (likely for this installation).

7. Press and hold Volume Down on the steering wheel until the LED turns solid Red.



8. Release **Volume Down**.
9. Access the **Radio** Menu.
10. In **General Settings** locate the **Steering Wheel Control** menu.
11. Change the setting from **Preset** to **Custom**.
12. Press the **Wrench** icon.
13. Press and Hold the desired function on the radio menu screen for two (2) seconds, then release. The function box field selected should stay illuminated and white.
14. Push and hold the corresponding function button on the steering wheel. An orange border will appear around the button in the radio menu if the programming is successful (Figure A) (**continued on Page 3**).

General Installation Instructions (cont.)

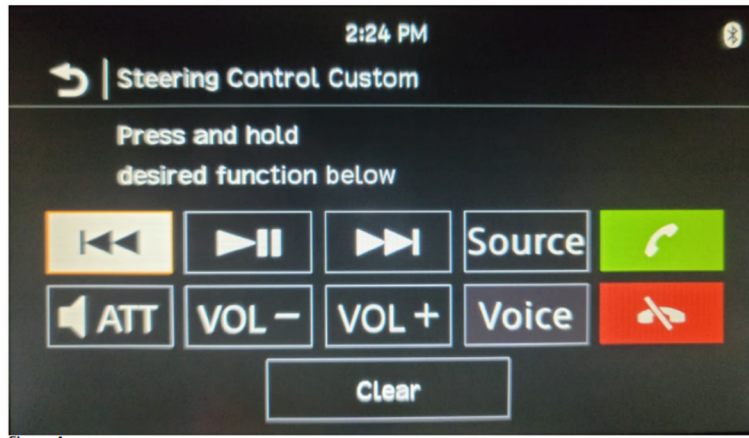


Figure A

Figure A

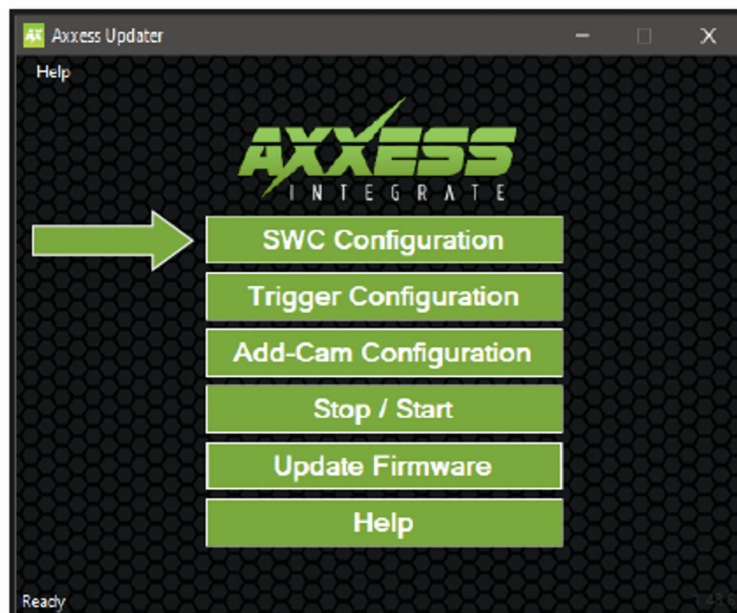
Perform the above instructions for each function you wish to assign.

TIP

If a function does not program successfully, change the radio type on the interface to one of the other options highlighted in the table on the last page.

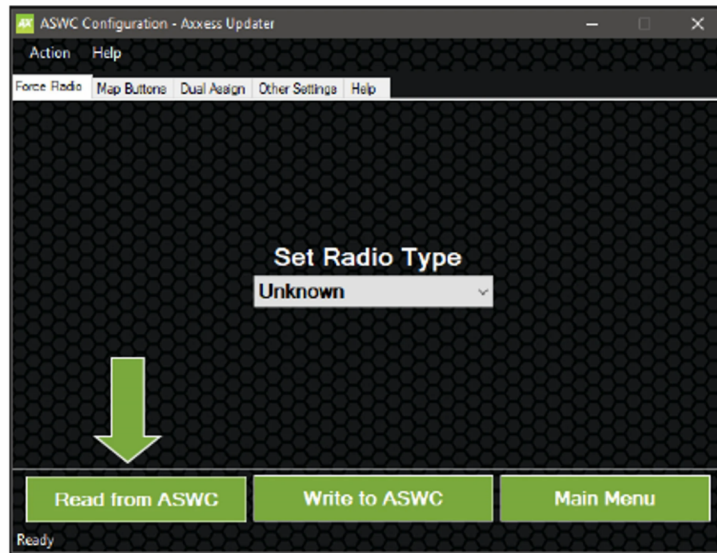
Desktop Installation Instructions

1. Connect the interface and select **SWC Configuration**. (continued on Page 4)



Desktop Installation Instructions (cont.)

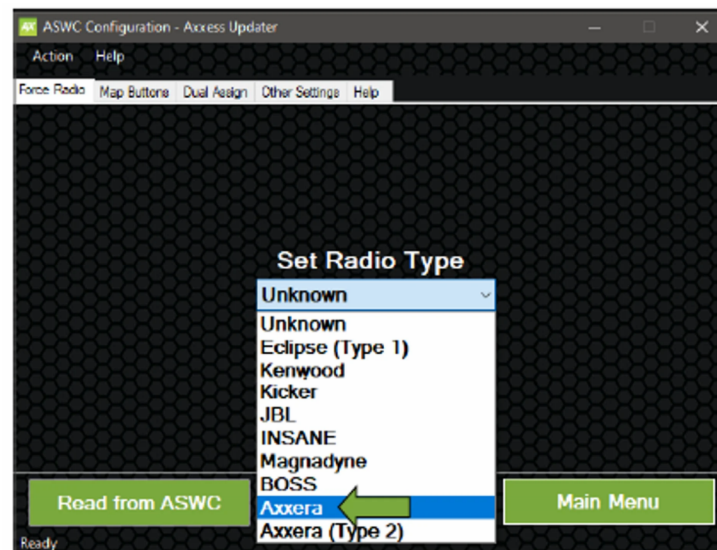
2. Click **Read from ASWC**.



3. Select **Axxera** from the **Set Radio Type** dropdown (continued on Page 5).

WARNING

Do not select Axxera (Type 2).



Desktop Installation Instructions (cont.)

- Return the interface to the vehicle.

WARNING

If you have not already done so, refer to [the vehicle specific instructions](#) to program the interface before proceeding.

- Access the **Radio Menu**.
- In **General Settings** locate the **Steering Wheel Control** menu.
- Change the setting from **Preset** to **Custom**.
- Press the **Wrench** icon.
- Press and Hold the desired function on the radio menu screen for two (2) seconds, then release. The function box field selected should stay illuminated and white.
- Push and hold the corresponding function button on the steering wheel. An orange border will appear around the button in the radio menu if the programming is successful (Figure A) (**continued on Page 6**).

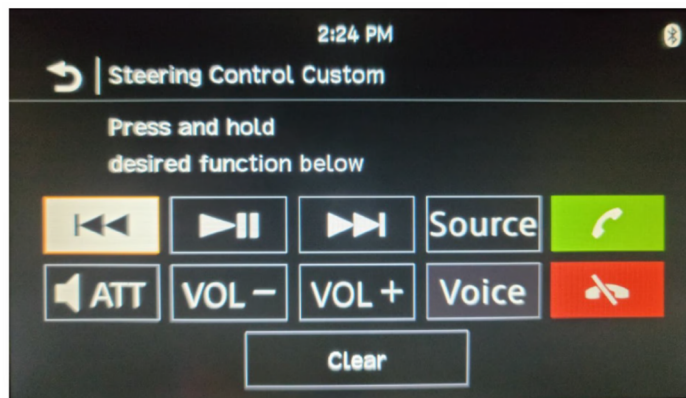


Figure A

Perform the above steps for each function you wish to assign.

TIP

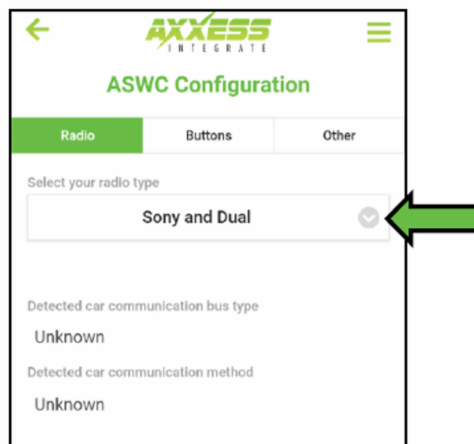
If a function does not program successfully, change the radio type on the interface to one of the other options highlighted in the table on the last page.

App Installation Instructions

1. Connect the interface to your device and click **Remap SWC**.



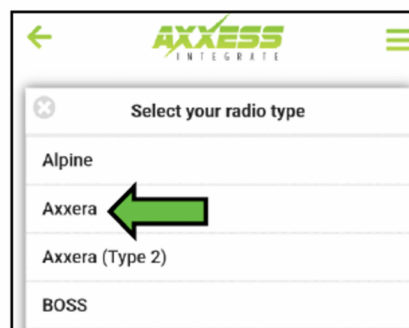
2. Open the **Select your Radio Type** dropdown.



3. Select **Axxera** from the **Select your Radio Type** dropdown. (continued on Page 7)

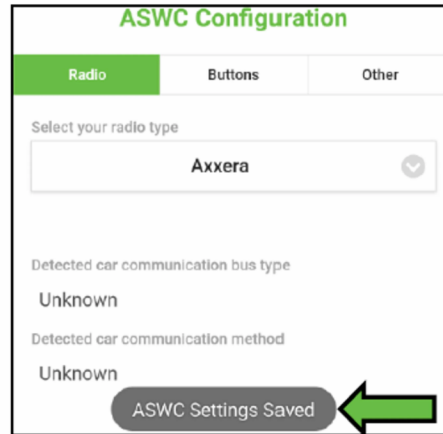
WARNING

Do not select **Axxera (Type 2)**.



App Installation Instructions (cont.)

- If the update is successful, an **ASWC Settings Saved** notification will display on the bottom of the screen.



- Return the interface to the vehicle.

WARNING

If you have not already done so, refer to [the vehicle specific instructions](#) to program the interface before proceeding.

- Access the **Radio Menu**.
- In **General Settings** locate the **Steering Wheel Control** menu.
- Change the setting from **Preset** to **Custom**.
- Press the **Wrench** icon.
- Press and Hold the desired function on the radio menu screen for two (2) seconds, then release. The function box field selected should stay illuminated and white.
- Push and hold the corresponding function button on the steering wheel. An orange border will appear around the button in the radio menu if the programming is successful (**continued on Page 8**).

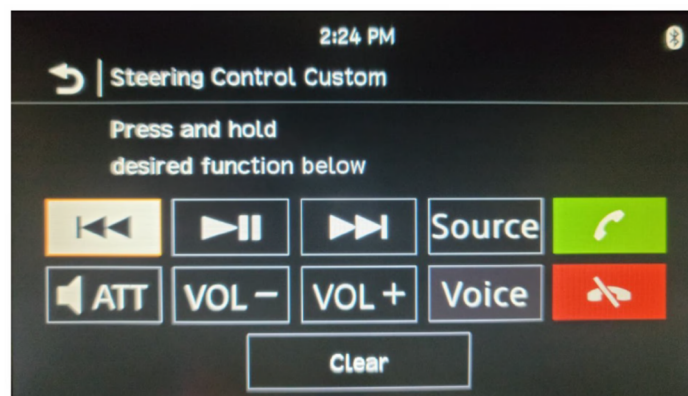


Figure A

App Installation Instructions (cont.)

Perform the steps on the above pages for each function you wish to assign.

TIP

If a function does not program successfully, change the radio type on the interface to one of the other options **bolded** in the table below.

Radio Type Table

Radio #	Radio	Radio #	Radio
1	Eclipse Type 1	13	LG
2	Kenwood	14	PARROT
3	Clarion Type 1	15	XITE
4	Sony/Dual	16	Phillips
5	JVC	17	Kicker
6	Pioneer or Jensen	18	JBL
7	Alpine	19	INSANE
8	Visteon	20	Magnadyne
9	Valor	21	Boss
10	Clarion Type 2	22	Axxera
11	Metra OE	23	Axxera (Type 2)
12	Eclipse (Type 2)	24	Alpine (Type 2)