



## Replacement LED Headlights for Harley Davidson Road Glides

**HE-RGHKB (Black Front Face)**

**HE-RGHKS (Silver Front Face)**

**Applications: 2004-2013**

**Harley Davidson Road Glides**

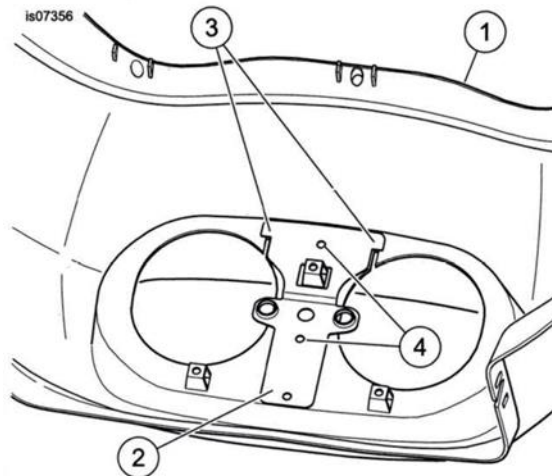
**Tools Needed** – Torx Driver #25, 1/2" Box Wrench, Electric Drill,  
17/64" Drill bit, Small standard screwdriver

### **Instructions:**

1. Refer to the motorcycle's instructional manual for proper headlight removal.
2. Remove the windshield and fairing according to the service manual's instructions and store in a secure location.

**NOTE:** If your motorcycle is equipped with a clear OEM headlamp cover, it will have to be removed.

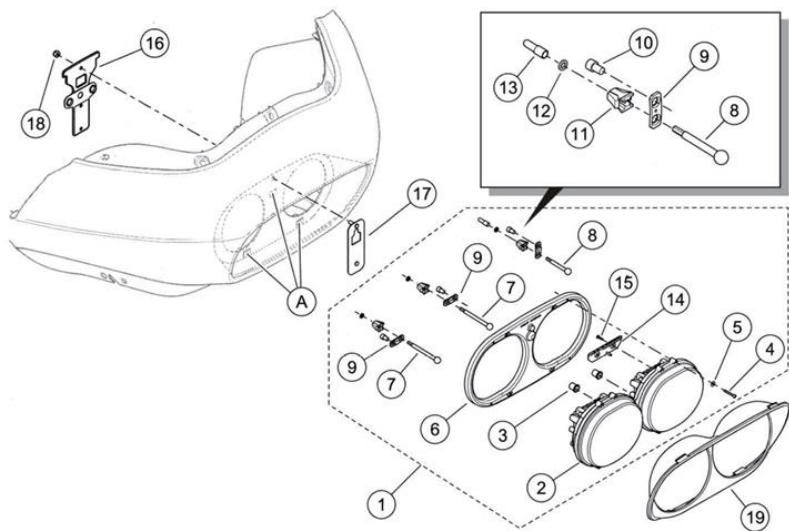
3. Clean the mounting bracket area on the fairing (1) with a 50-50 mixture of isopropyl alcohol and distilled water. Allow to dry thoroughly.
4. Remove the adhesive backing from the headlamp support bracket (2) and carefully position the bracket to the backside of the outer fairing while aligning the edges of the L-shaped notches (3) with the edges of the slots in the fairing. Press the bracket firmly into place while maintaining steady pressure for about one minute.  
**NOTE:** For proper adhesion, the ambient temperature should be above 60° F (16° C) and allow a minimum of at least 24 hours before exposing to extreme weather. Waiting 72 hours will increase the bond to its maximum strength as long as it is in normal room temperature.
5. Use the bracket holes (4) as a guide and drill two 17/64 in (6.8 mm) to 9/32 in (7mm) diameter holes in the fairing, this will allow for the bolts attached to the outer reinforcement bracket to be received.



1. Outer fairing
2. Lamp support bracket
3. L-shaped notch (2)
4. Drill (2) holes in fairing

6. On the front side of the fairing, chamfer the newly drilled holes to clean up any burrs.
7. Secure the outer reinforcement (17) to the inner reinforcement with the supplied locking nuts (18).
8. Remove the adjusting screws and hardware from the OEM headlight assembly and install them onto the new dual headlight assembly. **Do not use included adjusting screws and black headlamp mounting clips.**
9. Install the dual headlight assembly into the outer fairing by aligning the OEM adjusting screws (7 and 8) with the holes at the base of the three pockets (A) in the dual headlamp bezel (6).
10. Align the three headlamp mounting clips (11) with the sides of the pockets. Align the two bushings (3) with the holes in the LED lamp support bracket (16).
11. Pressing it into place from the front of the fairing, a snap will be heard and felt to confirm it is locked into place. **NOTE:** ensure the wings of the headlamp clips are fully engaged and sprung out in the rectangular holes in the fairing.
12. The O-rings (12) should be seated squarely between the headlamp clips and the base of the pockets (A).
13. Install the thread protector cap (13) over the threads of the upper adjusting screw (8).
14. Use the two supplied cable ties to install the heat shield over the section of wiring harness that will be directly behind the left-side headlight.
15. Plug factory harnesses into the back of the new HEISE LED dual headlight.
16. Power on lights to ensure proper connections were made.
17. Replace fairing and windshield according to the service manual's instructions.

18. Install outer headlight bezel around the new headlight by snapping it into place to complete install.



**Specifications:**

- (9) 5 watt Osram LEDs
- 2000LM low beam, draws 1.2a @ 13.8v
- 3500LM high beam, draws 1.9a @ 13.8v
- DOT approved for on-road use
- LED color: 6500K
- Polycarbonate lens
- H4 connector



1-800-221-0932

[www.HeiseLED.com](http://www.HeiseLED.com)

460 Walker Street, Holly Hill, FL 32117