



Fog Light Bracket Fits Ford Bronco 2021-Up

Part Components

- Uses OE mounting locations for installation
- Wiring harness included for easy installation with Bronco auxiliary switch wiring
- Black powder-coated brackets

Product Features

- Fits up to 3 Heise LED cube lights per bracket, (1) HE-B950, or (1) HE-BD8 Heise LED light bar.
- Increase safety and visibility by installing Heise LED fog lights within the front bumper of your Ford Bronco with these stylish Fog Light Brackets. These brackets use the OE mounting locations, so no drilling is required. A corrosion-resistant black powder-coated finish adds style and durability. Up to three Heise cube lights will fit on a bracket, and each bracket includes a wiring harness for easy installation with Bronco auxiliary switch wiring

A) Brackets



B) Harness



TABLE OF CONTENTS

Installation.....	2
- Bracket mounting.....	2
- Bracket configuration.....	3
- OE switch panel wiring.....	4
- Routing path.....	5
- Routing.....	6
- Harness Hardwire.....	10

TOOLS REQUIRED

Hand Tools

- Philips screw driver
- Panel tool
- T40 Torx®
- Wire stripper
- Wire crimper

Additional Supplies

- Cable ties (recommended)

-Bracket mounting

1. Locate the (3) factory bolts at the top front edge inside each of the fog light cavities. (Figure 1 and Figure 2)
2. Using a T40 Torx®, remove these (6) bolts. (Figure 3)
3. Align the brackets so the bracket hump rises front to back, and the sweep angles towards the side of the vehicle. (Figure 4 and Figure 5)
4. Mount the desired lights to the bottom side of the brackets (in a hanging orientation). Do not fully tighten at this time.
5. Slide the bracket between the front tire and bumper, up into the fog light cavity.
6. Using the factory bolts mount the brackets into place, and fully tighten the (3) factory bolts to 18 lb.ft (25Nm). Repeat for the other side.



Figure 1



Figure 2



Figure 3



Figure 4



Figure 5

-Bracket configuration

7. Adjust the position of the lights so that they are evenly spaced. At this time fully tighten the lights mounting bolts. Repeat for the other side.

Figure 6 - (2) HE-BCS32PK, (1) BCS2PK

Figure 7 - (3) HE-BCS32PK

Figure 8 - (2) HE-B950 (1 per side)

Figure 9 - (2) HE-BD8 (1 per side)

Figure 6

Figure 7

Figure 8

Figure 9



-OE switch panel wiring

If the vehicle is equipped with the factory switch panel continue, if not go to harness hardwire on page 10.

1. Pull the hood release handle near the driver kick panel to release the hood.
2. Open the hood and locate the auxiliary switch wires located in the driver side corner of the engine bay by the firewall. (Figure 10)
3. The included harness is intended to be connected to the AUX 4, AUX 5, and AUX 6 switch wires, which are brown (set 1), blue/orange (set 2), and yellow/orange (set 3) respectively. (Figure 11)
4. Remove the protective cover from the auxiliary brown, blue/orange, and yellow/orange wires, strip off a ¼" of insulation from each, and crimp to the harness's respective wire.
5. Ground the black wire from the harness marked "chassis ground" to a factory grounding point in the engine bay.

Switch	Wire Color	Fuse
AUX 1	Yellow	30A
AUX 2	Green/Brown	15A
AUX 3	Violet/Green	10A
AUX 4	Brown	10A
AUX 5	Blue/Orange	10A
AUX 6	Yellow/Orange	10A

Figure 11

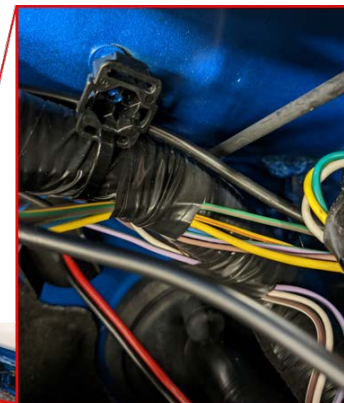


Figure 10

-Routing

Routing path



-Routing

6. Locate the black hood release cable running along the inside of the driver side fender.

(Figure 12)

7. Cable tie the harness to the hood release cable (do not over-tighten), working down the fender and around to the front of the battery.

8. In front on the battery locate the large black harness going down towards the bottom of the engine bay. (Figure 13)



Figure 12



Figure 13

-Routing

9. Using the factory harness as a guide, route the harness down and out the driver side fog light cavity. (Figure 14 and Figure 15)

10. Plug in the driver side “set 1” connector to the center most cube light, “set 2” connector to the middle cube light, and “set 3” connector to the cube light nearest the driver side.

*If using less that (3) lights, omit the same set(s) of connectors on both sides of the vehicle.

11. Inside the driver front wheel well, locate the front facing screw clip. Using a Philips and panel tool, remove the clip. Repeat on the passenger side. (Figure 16 and Figure 17)



Figure 14

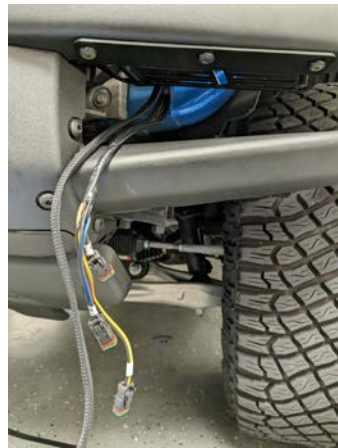


Figure 15



Figure 16



Figure 17

-Routing

12. Feed the passenger side portion of the harness back through the fog light cavity and into the driver wheel well.

13. Pull the wheel well liner back and locate the large black harness running horizontally across the bottom of the engine bay. (Figure 18 and Figure 19)

14. Feed the passenger portion of the harness across to the front passenger wheel well, securing the harness to the factory harness along the way. (Figure 20 and Figure 21)



Figure 18



Figure 19



Figure 21

Figure 20

-Routing

15. Feed the passenger portion of the harness f the passenger wheel well into the passenger fog light cavity. (Figure 22)
16. Plug in the passenger side “set 1” connector the center most cube light, “set 2” connector to the middle cube light, and “set 3” connector to the cube light nearest the passenger side.
17. Secure any excess cab
18. Reinstall screw clips in both wheel wel
19. Turn on the vehicle and test functionali



Figure 22

-Harness hardwire

1. Open the hood and connect the harness as shown below.

- a. Ground the single black wire from the harness marked "chassis ground" to a factory grounding point in the engine bay.
- b. A switch, fuse holder, and relay will be need for each "set" wire (brown, blue/orange, & yellow/orange). (Figure 23)

2. Continue with harness routing, page 5.

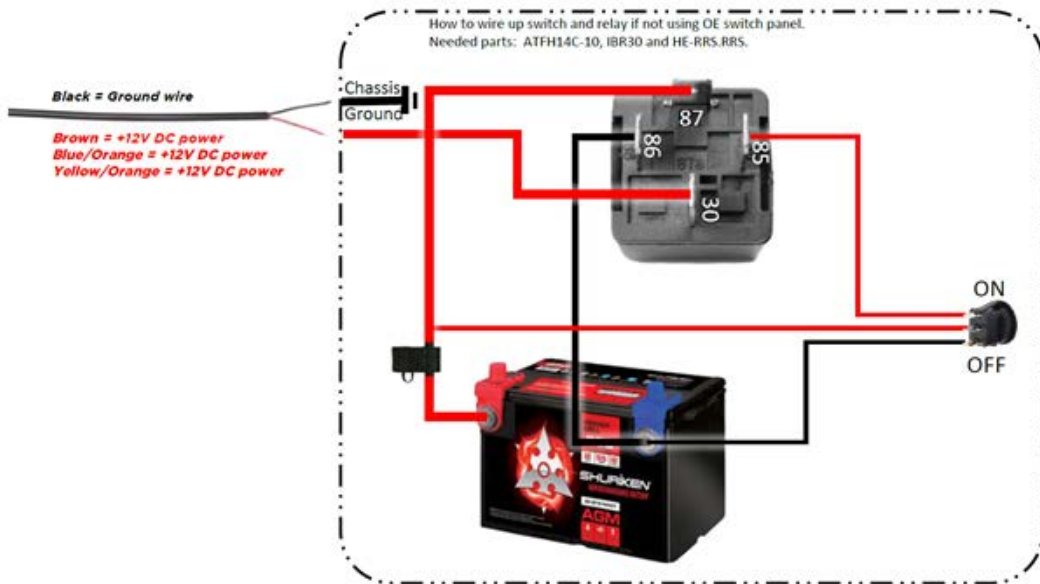


Figure 23

Document date of purchase, and place of purchase.

Date: _____

Place of Purchase: _____

Install Notes: _____



Thank you for purchasing from Metra Electronics! We're excited to see your installs, scan the QR to share on our Instagram. If you have any questions, comments, feedback on the product, please contact our tech support email via techsupport@metra-autosound.com.

Don't forget to Visit HeiseLED.com to view the available installation parts and accessories.



KNOWLEDGE IS POWER

Enhance your installation and fabrication skills by enrolling in the most recognized and respected mobile electronics school in our industry.

Log onto www.installerinstitute.com or call

800-354-6782 for more information and take steps toward a better tomorrow.



Metra Recommends MECP
certified technicians

Having difficulties?

Contact our tech support line at:

Techsupport@metra-autosound.com

Or via phone at:

368.257.1187

TECH SUPPORT HOURS (EST)

Monday-Friday: 9:00AM – 7:00PM

Saturday: 10:00AM – 7:00PM Sunday:

10:00AM – 4:00PM

Closed for most US Federal Holidays