



## Jeep® Accessories

### JP-SML1



**LED side marker lights for Jeep Wrangler with halos**

**Application: 2007 - 2018 Jeep JK / JKU**

**Tools Needed - Pick Tool, Pry tool, 15/64" Drill bit and Drill**

**Disclaimer: Metra Electronics assumes no responsibility for damage to vehicle.**

#### **Instructions:**

1. Start by turning the steering wheel to the opposite direction of where you plan to start working from.  
(A)
2. Locate leading edge plastic rivet. (B)



(A)



(B)

3. Use pick to push center pinout. (C)
4. Use pry tool to remove rivet body. (D)



(C)



(D)

5. Retain rivet pin and body for reinstallation. (E)
6. Twist and remove light, unplug light from harness. (F)



(E)



(F)

7. Use pry tool at lower edge to pull outer panel away from inner panel. Squeeze clip on top rear of light and push top of light out. Pull light down and out. (G)
8. Remove Light (H)



(G)



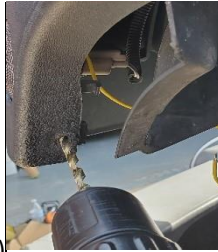
(H)

9. Twist and pull connector out. Feed connector and leads between outer and inner fender panels into mount hole. Slide light up into location and snap retaining clip in. This will take force. Reinsert connector back into side light housing and twist to lock in. (I)

10. Use 15/64" drill bit to drill new rivet hole in inner panel and connect harness to light. (J)



(I)



(J)

11. Reinsert rivet body in panels (K)
12. Press pin back into rivet body from rear (L)



(K)



(L)

13. To activate the halo feature, attach YELLOW wire to a 12V accessory circuit.
14. Test functionality.
15. Repeat the previous step for the other side.

Thank you for purchasing your Jeep Accessory from Metra Electronics! We're excited to see you're installs, also if you have any questions, comments, feedback on the product, please contact at Tech Support email via [techsupport@metra-autosound.com](mailto:techsupport@metra-autosound.com).



[www.MetraOnline.com](http://www.MetraOnline.com)