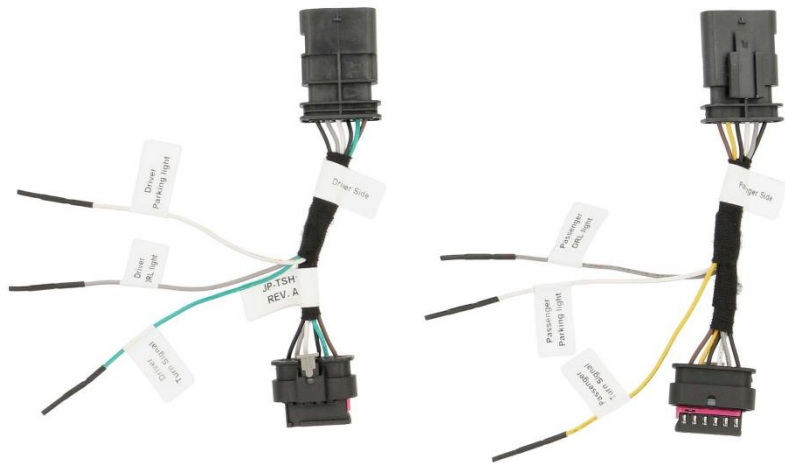


Jeep JL Wrangler - JT Gladiator - Trigger harness



JEEP JL WRANGLER 2018-UP, JEEP JT GLADIATOR 2020-UP

Visit [HEISELED.COM](https://www.heiseled.com) to view the available installation parts and Jeep accessories.

FEATURES

- OE Connections
- Provides DRL, parking light and turn signal triggers
- Labeled connections
- Drivers and passenger harnesses

Tools needed

- T30 Torx
- 10mm socket and ratchet
- Panel removal tool

Having difficulties?

Contact our tech support line at:
Techsupport@metra-autosound.com

Or via phone at:
368.257.1187

TECH SUPPORT HOURS (EST)

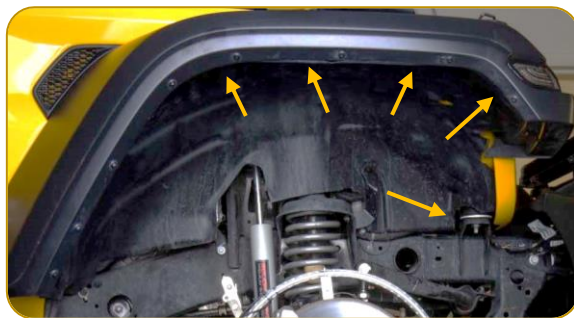
Monday-Friday: 9:00AM - 7:00PM
Saturday: 10:00AM - 7:00PM
Sunday: 10:00AM - 4:00PM

Closed for most US Federal Holidays

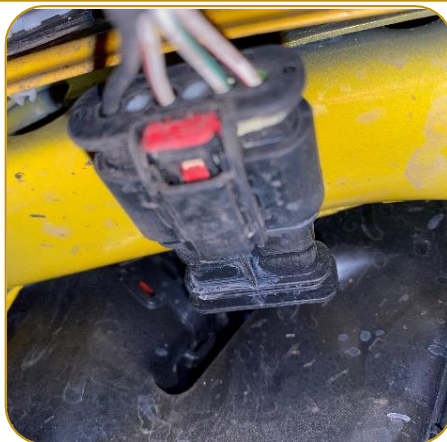
1. Remove (3) 10mm bolts from inside fender well.



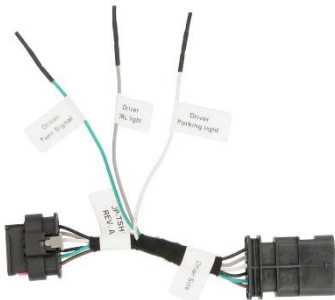
2. Using a panel removal tool, pull out the 5 Christmas tree clips. Pull the inner fender liner back, starting at the front to expose light housing and wiring.



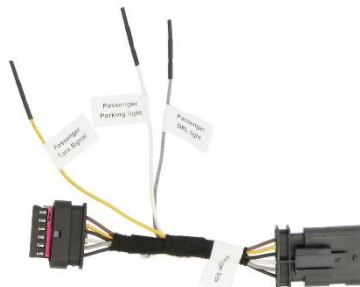
3. Locate the fender light harness, on inner fender support. Pull back Red tab, and release harness.
4. Connect the JP-TSH1 harness for left and right of the Jeep. Route triggers to labeled output on the JP-TSH1.



Trigger output: Drivers side
White – Parking light
Gray – DRL
Green: Turn signal



Trigger output: Passengers side
White – Parking light
Gray – DRL
Yellow: Turn signal





Thank you for purchasing your lighting from Metra Electronics! We're excited to see your installs, scan the QR to share on our Instagram. If you have any questions, comments, feedback on the product, please contact our tech support email via techsupport@metra-autosound.com.

Don't forget to Visit HEISELED.COM to view the available installation parts and Jeep accessories.

