



TE-PLGESC Manual

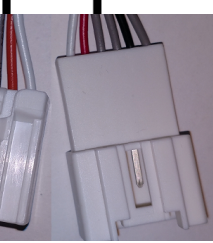
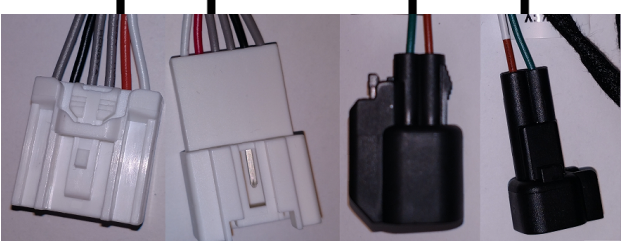
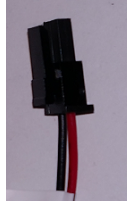
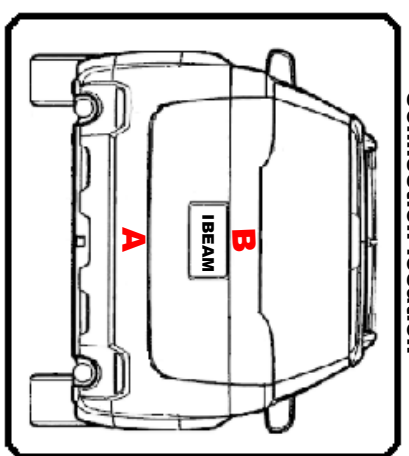
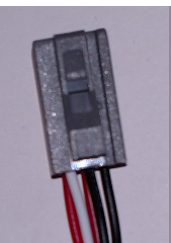
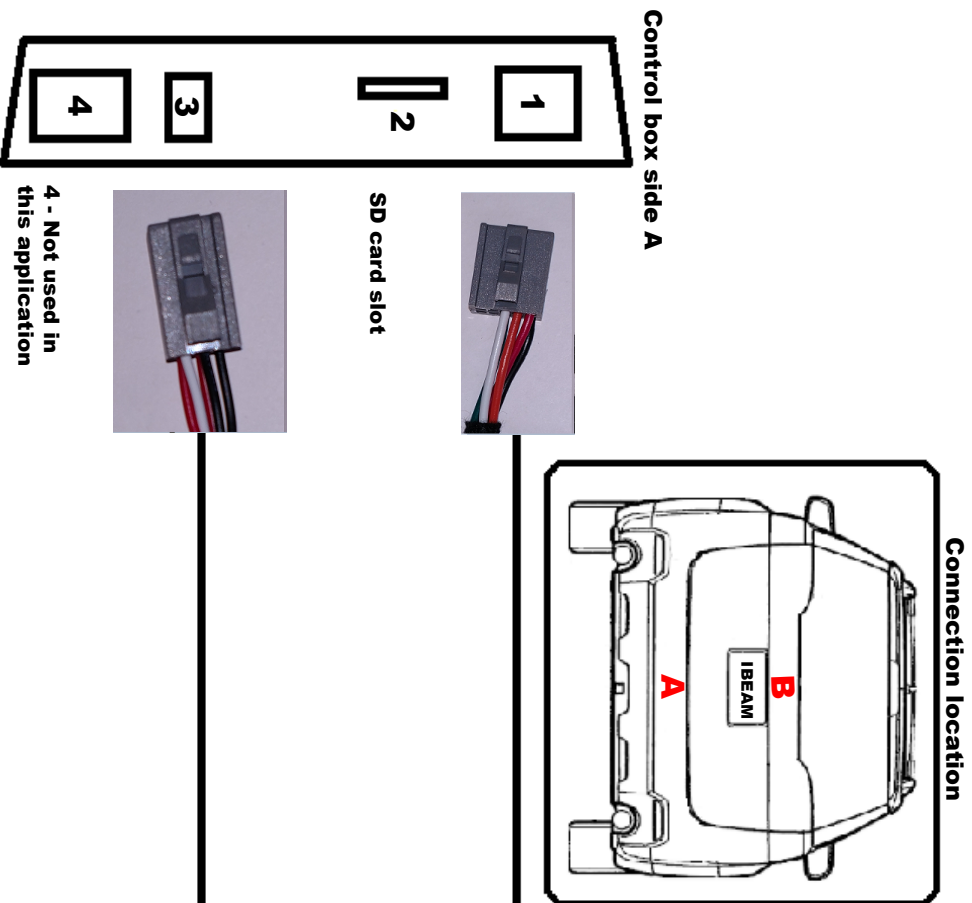
2016-2018 Ford Escape

iBeamUSA.com
MetraDealer.com
techsupport@metra-autosound.com

 **TECH SUPPORT**
800-253-8324

07/20/18

1. Cable Connections



Speed Adjustment

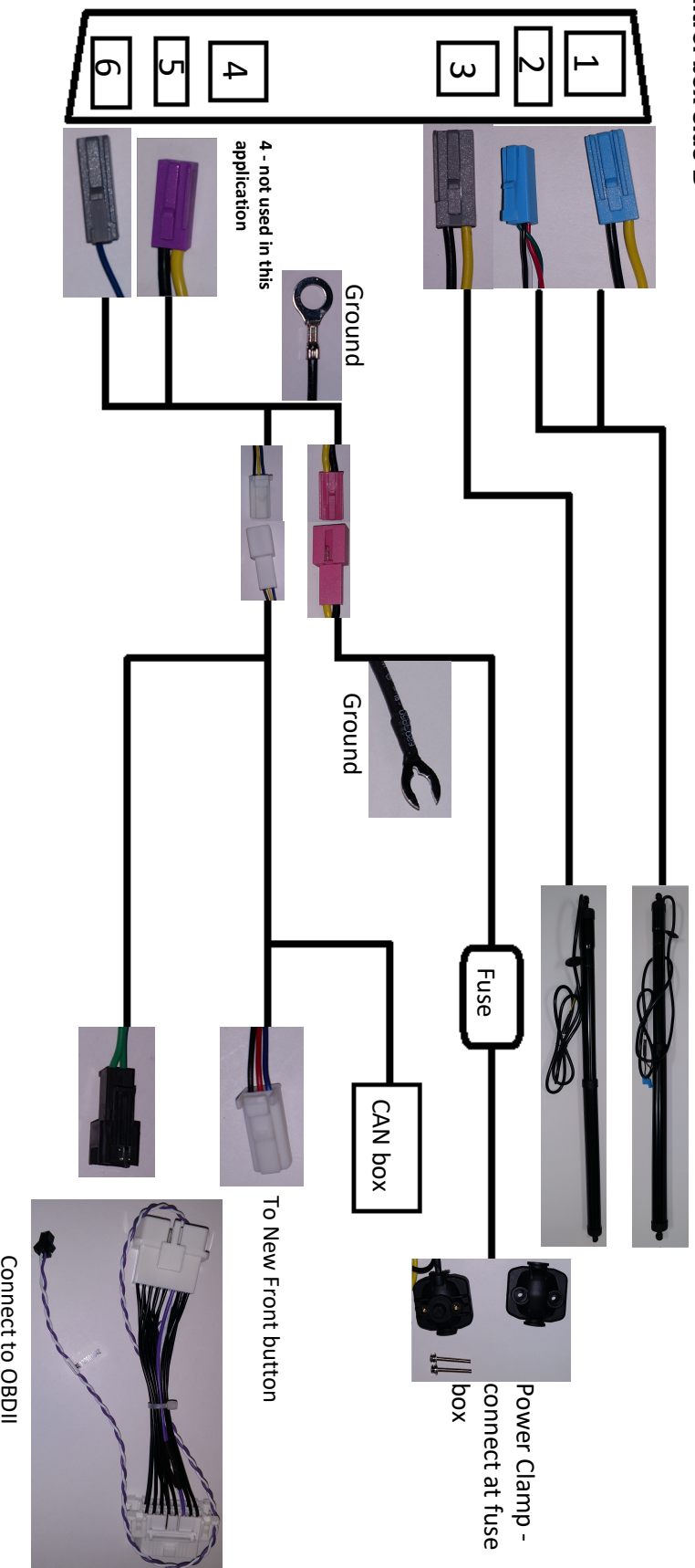
Press and hold the Rear button until the system beeps 5 times, then release. 10 quick beeps = fast 1 long beep = slow (default)

Height Adjustment

Adjust the tailgate by hand to the desired height. Then press and hold the Front button until the system beeps 2 times, then release. Perform a key cycle to verify adjustment.

1. Cable Connections - contin.

Control box side B



After installation is complete, close the tailgate manually, slowly, so the system can initialize.

This system can operate with the original remote as follows:

- Long press of unlock button
- Depending on the remote some may be 3 quick presse

2. Installation



1. Remove the top panel of the rear tailgate.



2. Remove the side panels on both sides of the tailgate.



3. Pry the handle cover off and remove the screws.



4. Remove the bottom large panel from the tailgate.



5. Remove the factory struts.



6. Remove the factory bracket by removing the two screws.



7. Replace factory brackets with the new brackets using the OE screws.



8. Install the new powered struts.



9. Use this grommet to run the wiring for the powered struts.



10. Unplug the connector from the factory handle and place the t-harness inline.



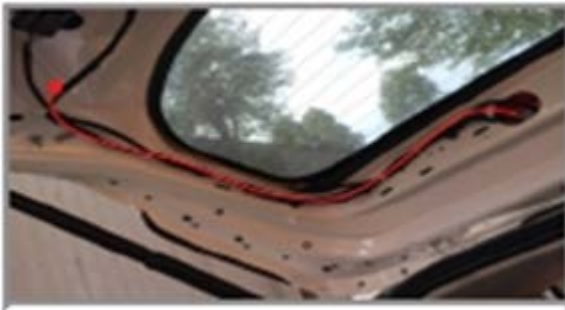
11. Unplug the connector from the lock module and place the t-harness inline.



12. This is the proper location of where to mount the control box in the tailgate. Also find a good location in the tailgate for the buzzer. Buzzer attaches with double side tape.



13. Use the provided fishing tool to run the power wire through the shown boot of the tailgate.



14. Route the power wire through the tailgate with the existing wire. Plug all needed connectors into the control box.



15. Route the power wire to the front of the vehicle.

16. Remove the OBDII connector from the panel and put the t-harness inline.

17. Connect the OBDII t-harness to the power run that is run through the vehicle.



18. Apply the provided anti-pinch reminders on the tailgate.