



TE-180 User Manual

iBeamUSA.com
MetraDealer.com
techsupport@metra-autosound.com

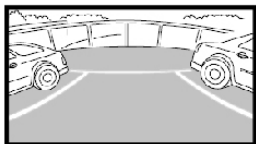
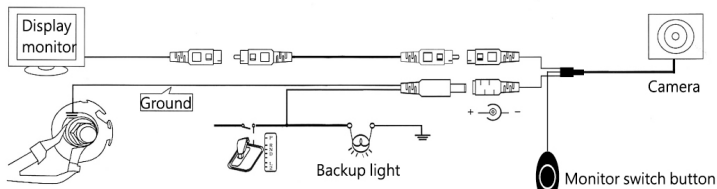


TECH SUPPORT
800-253-8324

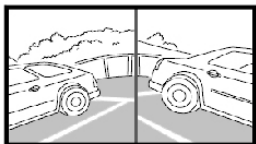
Camera



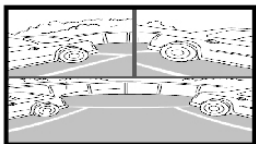
1. Find a suitable location to surface mount install the camera. Make sure the camera's view is unobstructed and be careful not to drill into any wires that might damage the vehicle. When all connections have been made and before mounting the camera, verify the camera is working and has good view of the area. Then mount the camera down with the supplied two screws.
2. Connect the RED wire to the +12 volt reverse wire
3. Connect the BLACK wire to ground (a metal, non-painted surface).
4. Run video cable though vehicle, up to video display. (Avoid placing video cable where it can get pinched or damaged).
5. Attach the YELLOW video rca to camera's output and to the reverse camera input of the radio or video display.



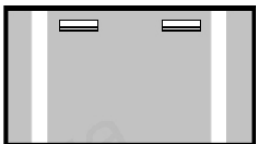
Wide View mode



Corner View mode



Multi View mode



Top View mode

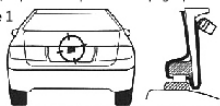
Choice of mounting locations

Location one: above tailgate (see exhibit 1)

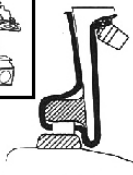
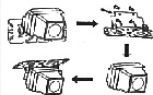
Location two: Underneath tailgate touch plate (see exhibit 2).

Remove the rotating mount before installation. Use 3M tape or screws to install the camera in reverse (keep the backup camera in upright position).

picture 1



picture 2

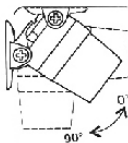


Adjusting viewing angle

Once the backup camera is installed, loosen the screws on rotating mount to rotate camera positions, see exhibit above

picture 3

←
Front wheel
direction



IMPORTANT

If you are having difficulties with the installation of this product, please call our Tech Support line at 1-800-253-TECH. Before doing so, look over the instructions a second time, and make sure the installation was performed exactly as the instructions are stated. Please have the vehicle apart and ready to perform troubleshooting steps before calling.



KNOWLEDGE IS POWER

Enhance your installation and fabrication skills by enrolling in the most recognized and respected mobile electronics school in our industry.

Log onto www.installerinstitute.com or call 800-354-6782 for more information and take steps toward a better tomorrow.



Metra recommends MECP certified technicians

Attention

When connecting with power cable, please make sure not to mistake the positive and negative pole, otherwise the fuse will blow immediately for security protection. If it happens, please replace the blown fuse with a new one with same specification, after connecting properly to the right pole. Don't randomly increase the current rating of the fuse, and NEVER use metal wire as a substitute.